

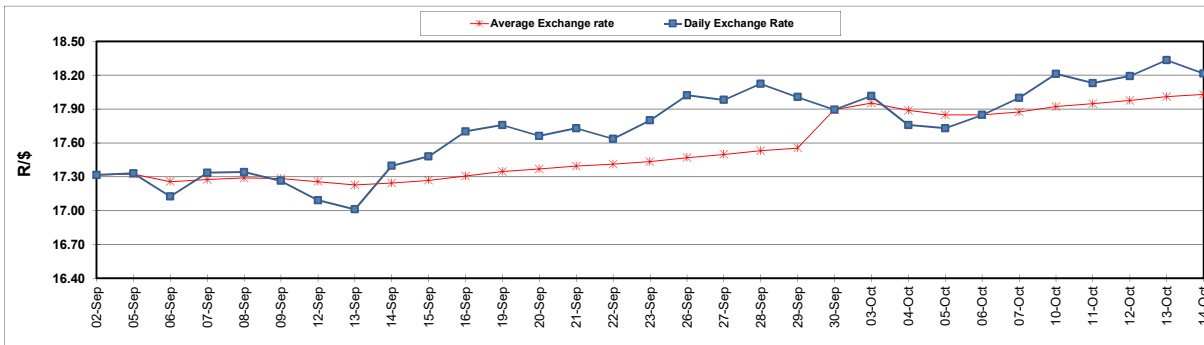
	PETROL 95 ULP	PETROL 93 ULP & LRP	DIESEL 0.05%	DIESEL 0.005%	ILL. PAR.
GAUTENG PUMP PRICE (SA c/l) AS FROM 05/10/2022	2,236.000	2,206.000	-	-	-
WHOLESALE PRICE (SA c/l) AS FROM 05/10/2022	-	-	2,406.100	2,430.500	1,699.288
SINGLE NATIONAL MAXIMUM RETAIL PRICE	-	-	-	-	2,240.000
BASIC FUEL PRICE - 14/10/2022 (SA c/l)	1,225.849	1,199.054	1,719.799	1,749.447	1,641.117
PRESS RELEASE CONTRIBUTION TO BFP 05/10/2022 - 14/10/2022 (SA c/l)	1,145.750	1,115.750	1,523.630	1,548.030	1,481.128
UNIT OVER/(UNDER) RECOVERY - 14/10/2022 (SA c/l)	(80.099)	(83.304)	(196.169)	(201.417)	(159.989)
AVERAGE BASIC FUEL PRICE 30/09/2022 - 14/10/2022	1,215.313	1,191.182	1,678.867	1,704.825	1,563.941
AVERAGE UNIT OVER/(UNDER) RECOVERY 30/09/2022 - 14/10/2022	(41.745)	(51.160)	(157.964)	(160.886)	(66.176)

### ANALYSIS MOVEMENT OF AVERAGE OVER/(UNDER) RECOVERY

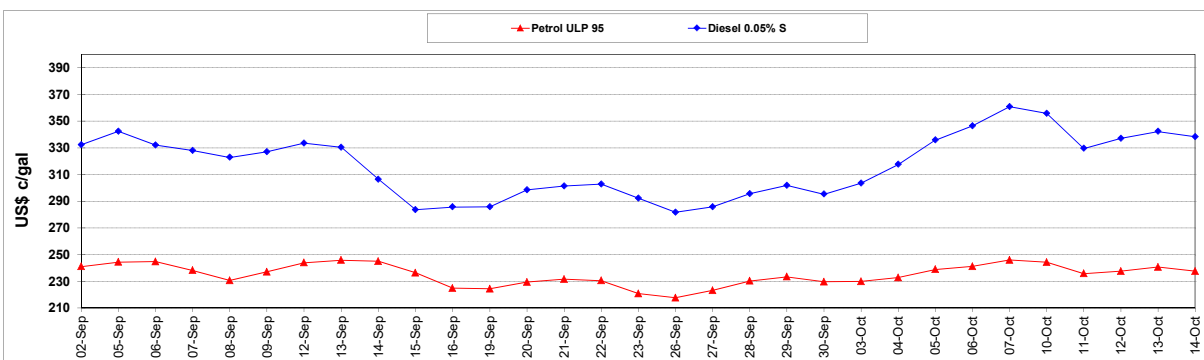
	PETROL 95	PETROL 93	DIESEL 0.05%	DIESEL 0.005%	ILL. PAR.
- MOVEMENT IN INTERNATIONAL PRODUCT PRICES	(40.168)	(49.613)	(155.785)	(158.673)	(64.147)
- MOVEMENT IN EXCHANGE RATE	(1.577)	(1.546)	(2.179)	(2.213)	(2.030)
AVERAGE UNIT OVER/(UNDER) RECOVERY 30/09/2022 - 14/10/2022	(41.745)	(51.160)	(157.964)	(160.886)	(66.176)

### R/\$ EXCHANGE RATE - (R/\$18.2130 - 14/10/2022)

#### EXCHANGE RATE USED IN BASIC FUEL PRICE



#### INTERNATIONAL PRODUCT PRICES OF BASKET USED IN BASIC FUEL PRICE



#### BASIC FUEL PRICE IN SA CENTS PER LITRE

